

# New Harmony - Salem Estates

LINE	BEARING	DISTANCE	LINE	BEARING	DISTANCE
L1	N 19°11'39" E	150.87'	L60	N 19°11'39" E	449.78'
L2	S 70°26'00" E	482.52'	L61	S 70°26'00" E	150.00'
L3	N 19°11'39" E	149.90'	L62	N 19°11'39" E	449.78'
L4	S 70°26'00" E	477.93'	L63	S 70°26'00" E	150.00'
L5	N 19°11'39" E	149.90'	L64	N 19°11'39" E	449.78'
L6	S 70°26'00" E	473.34'	L65	S 70°26'00" E	150.00'
L7	N 19°11'39" E	174.90'	L66	N 19°11'39" E	449.78'
L8	S 70°26'00" E	467.98'	L67	S 70°26'00" E	150.00'
L9	N 19°11'39" E	625.86'	L68	N 19°11'39" E	449.78'
L10	S 70°26'00" E	150.00'	L69	S 70°26'00" E	150.00'
L11	S 19°11'39" W	625.56'	L70	N 50°02'26" E	521.87'
L12	N 19°11'39" E	626.16'	L71	S 70°26'00" E	80.00'
L13	S 70°26'00" E	150.00'	L72	S 70°26'00" E	270.10'
L14	N 19°11'39" E	626.46'	L73	N 16°27'47" W	466.94'
L15	S 70°26'00" E	150.00'	L74	S 19°11'39" W	431.94'
L16	N 19°11'39" E	626.75'	L75	S 19°11'39" W	455.08'
L17	S 70°26'00" E	150.00'	L76	S 19°11'39" W	478.21'
L18	N 19°11'39" E	627.05'	L77	S 19°11'39" W	501.34'
L19	S 70°26'00" E	150.00'	L78	S 19°11'39" W	524.47'
L20	N 19°11'39" E	627.35'	L79	S 79°12'30" E	14.41'
L21	S 70°26'00" E	150.00'	L80	S 70°26'00" E	135.75'
L22	N 41°49'40" E	678.59'	L81	S 19°11'39" W	526.67'
L23	S 70°26'00" E	80.00'	L82	S 70°26'00" E	150.00'
L24	S 70°26'00" E	264.66'	L83	S 19°11'39" W	526.67'
L25	S 7°44'34" E	590.67'	L84	N 19°11'39" E	226.67'
L26	S 70°26'00" E	347.59'	L85	S 70°26'00" E	450.00'
L27	S 19°11'39" W	524.85'	L86	N 19°11'39" E	150.00'
L28	S 70°26'00" E	150.00'	L87	S 70°26'00" E	450.00'
L29	S 19°11'39" W	524.85'	L88	N 19°11'39" E	150.00'
L30	S 70°26'00" E	150.00'	L89	S 70°26'00" E	450.60'
L31	S 19°11'39" W	524.85'	L90	S 19°44'39" W	62.21'
L32	S 70°26'00" E	150.00'	L91	S 19°11'39" W	87.79'
L33	S 19°11'39" W	524.85'	L92	N 70°26'00" W	736.35'
L34	S 70°26'00" E	150.00'	L93	S 70°26'00" E	736.56'
L35	S 19°11'39" W	524.85'	L94	N 19°39'53" E	430.81'
L36	S 70°26'00" E	150.00'	L95	N 19°39'53" E	430.81'
L37	S 19°11'39" W	524.85'	L96	N 19°39'53" E	430.81'
L38	S 70°26'00" E	150.00'			
L39	S 19°11'39" W	524.85'			
L40	N 19°11'39" E	199.85'			
L41	S 70°26'00" E	461.86'			
L42	S 17°26'24" W	199.98'			
L43	N 19°11'39" E	149.92'			
L44	S 70°26'00" E	458.11'			
L45	S 18°00'02" W	86.67'			
L46	S 17°26'24" W	63.33'			
L47	N 19°11'39" E	149.95'			
L48	S 70°26'00" E	454.99'			
L49	N 19°11'39" E	149.95'			
L50	S 70°26'00" E	451.86'			
L51	N 19°11'39" E	149.97'			
L52	S 70°26'00" E	450.00'			
L53	S 19°11'39" W	60.60'			
L54	S 18°00'02" W	89.40'			
L55	N 19°11'39" E	175.00'			
L56	S 70°26'00" E	450.00'			
L57	S 19°11'39" W	449.78'			
L58	N 19°11'39" E	449.78'			
L59	S 70°26'00" E	150.00'			

H.D. Milton Associates  
93.34 Acres  
O.R.B. 262, Pg. 1903

Thomas D. & Sherri F. Martin  
14.612 Acres  
O.R.B. 244, Pg. 1402

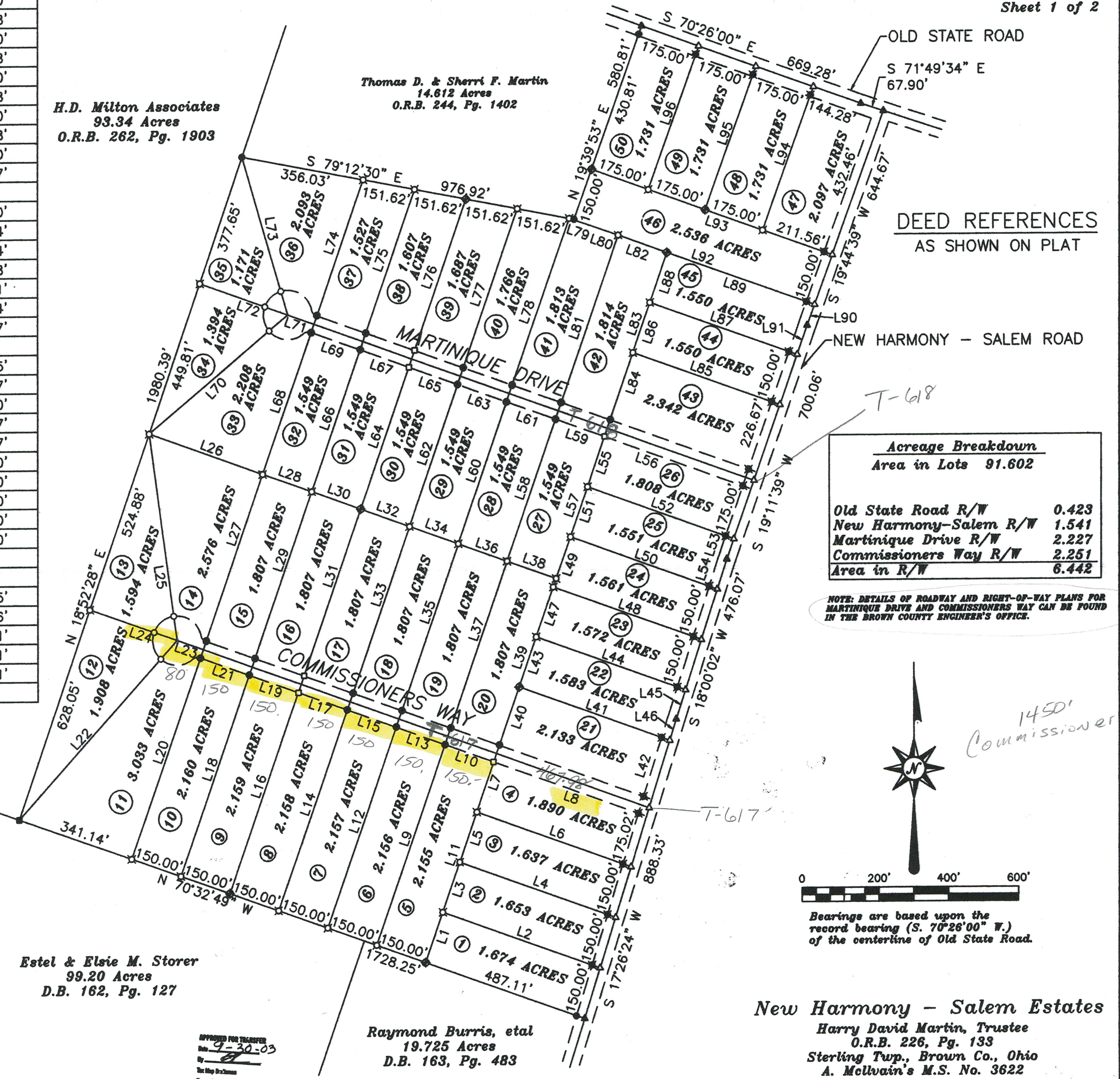
Estel & Elsie M. Storer  
99.20 Acres  
D.B. 162, Pg. 127

Raymond Burris, etal  
19.725 Acres  
D.B. 163, Pg. 483

**LEGEND**

- 1/2" IRON PIN FOUND
- ◆ 1" IRON PIN SET
- ◻ 1" IRON PIN SET @ 30.00'
- ▲ SPIKE FOUND
- △ SPIKE SET
- ⊠ 3/4" IRON PIN SET
- ⊞ 3/4" IRON PIN SET @ 25.00'
- ⊙ 3/4" IRON PIN SET @ 30.00'
- 3/4" IRON PIN SET @ 70.00'
- 5/8" IRON PIN FOUND

APPROVED FOR TRANSFER  
9-30-03  
The Map Division  
Brown Co. Engineer

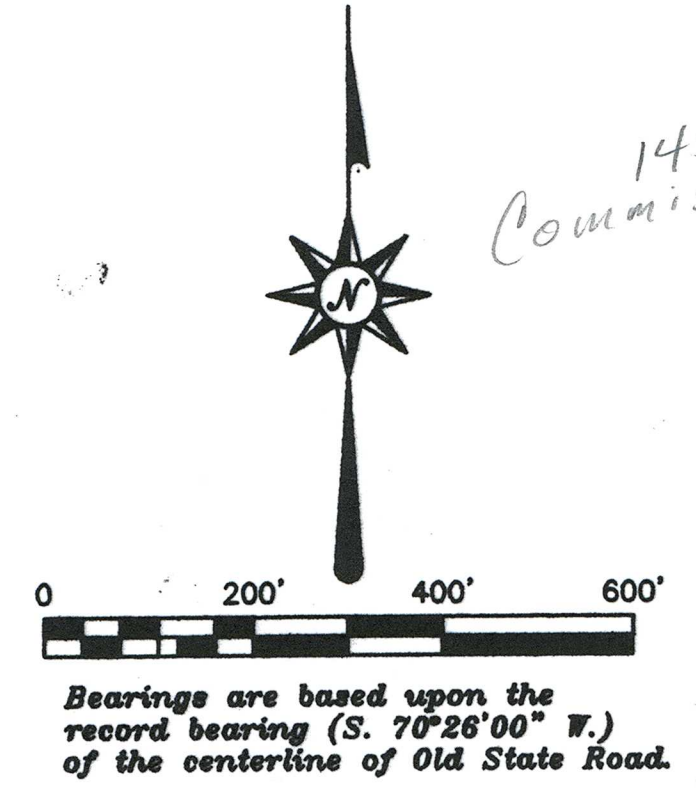


DEED REFERENCES  
AS SHOWN ON PLAT

**Acreage Breakdown**  
Area in Lots 91.602

Old State Road R/W	0.423
New Harmony-Salem R/W	1.541
Martinique Drive R/W	2.227
Commissioners Way R/W	2.251
<b>Area in R/W</b>	<b>6.442</b>

NOTE: DETAILS OF ROADWAY AND RIGHT-OF-WAY PLANS FOR MARTINIQUE DRIVE AND COMMISSIONERS WAY CAN BE FOUND IN THE BROWN COUNTY ENGINEER'S OFFICE.



New Harmony - Salem Estates  
Harry David Martin, Trustee  
O.R.B. 226, Pg. 133  
Sterling Twp., Brown Co., Ohio  
A. McIlwain's M.S. No. 3622  
Scale: 1"=200' May 1, 2003

1450'  
Commissioners Way